

Digital Projection Palm Pilot Control Software Users Manual

The Palm Pilot Control Program is designed to work with the computer control port of any Power Display, and will allow you extensive control of the projectors with no on screen menus. You may daisy chain the projectors and control multiple units with one Palm Pilot. This program is intended for use during operation. Currently, other programs are available from Digital Projection for full channel setup and design. A future release of our PC based remote emulator will be available for the Palm Pilot platform in mid 1999.

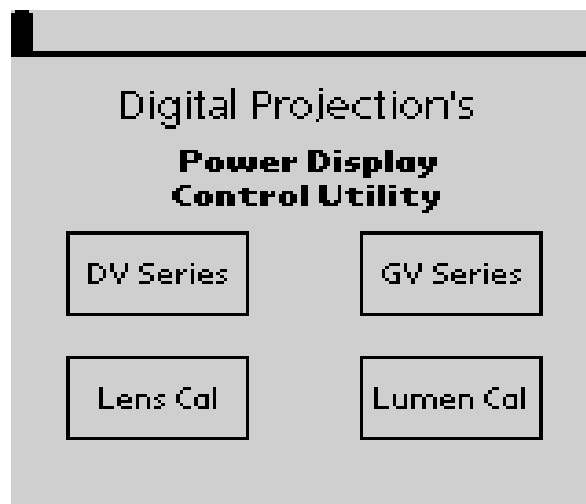


Figure 1

When you activate the Power Control icon, you will see the Function screen appear (Figure 1). Simply choose what function you wish to work with. If you choose a projector series, the program will automatically connect to the projector and query its settings as long as you have set up your cabling properly.

DV series connections:

Null modem wired 9 pin serial cable, male – female

GV series connections:

Straight wired 9 pin serial cable, male - female

Compact series (3gv, 5gvc) connections:

Straight wired 9 pin serial cable, male – female

Please refer to Appendix A for detailed connection information.

When you choose a projector series, upon connection being established, a new screen will appear (Figure 2). This will be referred to as the **Main screen**. This screen will have the main controls.

Choosing a channel from one through nine, requires only to hit the corresponding button. If you wish to select channel ten or higher, first press the +10 key, then the sequence for the channel you are selecting. You will see a display above the channel buttons indicating the status of your change.

Lamp power will be displayed directly below the Lamp label. You can choose the high or low setting, and the feedback will update correspondingly. Off will extinguish the lamp, and put the projector into a standby mode.

Picture mute will also display the current status, and allow you to change the state of muting.

Address allows you to set what address you want to control. **NOTE:** If you select address zero, with multiple projectors connected, your return values will be invalid. You must query only one projector at a time for its settings. The projector addresses must already be configured before operation of the Palm Pilot Control program. Future release will incorporate projector addressing utilities.

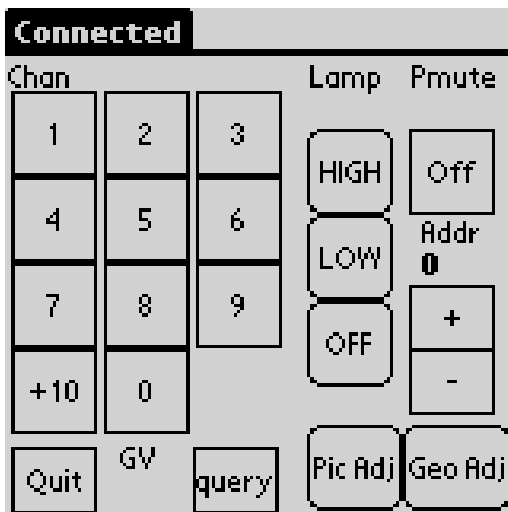


Figure 2

The **Pic Adj** button will open a page with adjustments for brightness, contrast, sharpness, hue, saturation, and color temperature.

The **Geo Adj** button will open a page with adjustments for size, position, pixel count, and pixel phase

The label marked **GV**, is an indicator of what connection type is currently in use.

You will find a second counter directly below this label. Every instance the counter reaches zero, the program automatically queries the projector settings, and sends an OSD off command, to ensure no accidental menus appear from anyone activating the OSD. NOTE: This program does not offer OSD on, and therefore can never activate an on screen menu on its own.

The Query button will allow you to request the current projector settings at any time you wish, if you choose not to wait for the timer to reach zero.

The Quit button will take you back to the Function screen, where you may choose to reconnect, or use another function.

Please check out website or call customer service for updates on new versions as they become available.

Appendix A

Communications Parameters

3GV

Straight wired 9 pin male to female cable

2 ----- 2
3 ----- 3
5 ----- 5

9600 baud, 8 bits, no parity, 1 stop bit, no flow control

5GV, 7GV, 8GV

Straight wired 9 pin male to female cable

2 ----- 2
3 ----- 3
5 ----- 5

19200 baud, 8 bits, no parity, 1 stop bit, no flow control

2V, 4DV, 5DV

2 ----- 3
3 ----- 2
5 ----- 5

9600 baud, 8 bits, no parity, 1 stop bit, no flow control