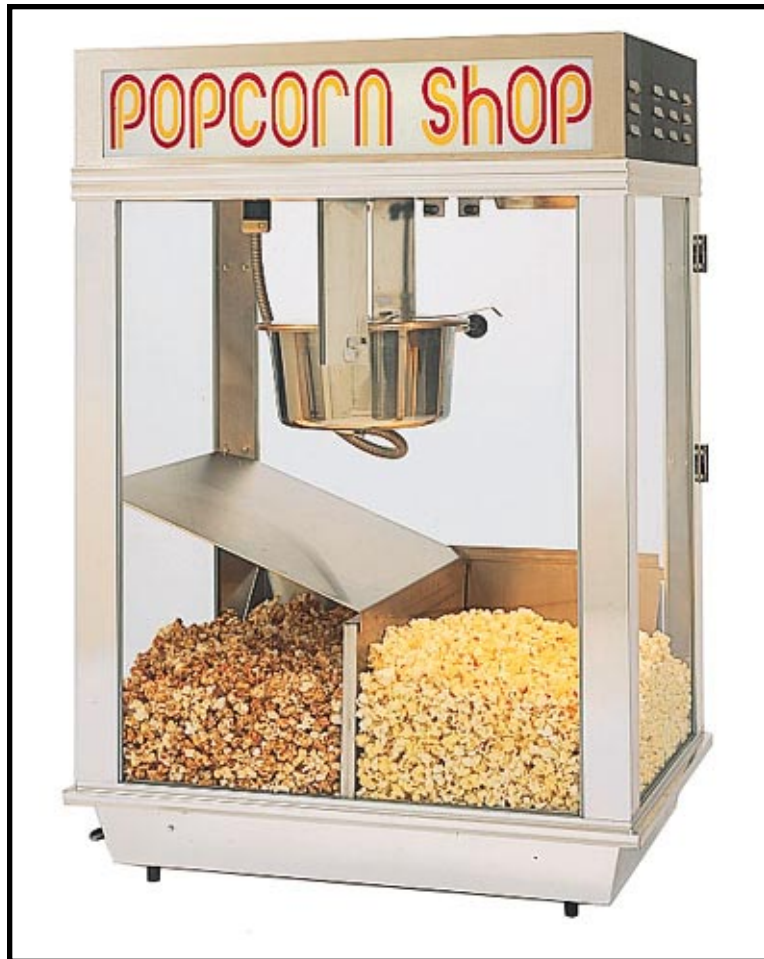


Popcorn Shop

Part No. 16118
Revised June 1996

Popcorn Machine Instruction Manual Model #2668





 **GOLD MEDAL**®


FUNFOOD EQUIPMENT & SUPPLIES


Cincinnati, OH 45241-4807 USA


SAFETY PRECAUTIONS

	⚠ CAUTION
	This equipment is designed and sold for commercial use only. This equipment is not to be used by the consumer in home use. Do not allow direct contact of this equipment by the public when used in food service locations. Only personnel trained and experienced in the equipment operation may operate this equipment. Carefully read all installation instructions before operating the equipment.

	⚠ WARNING
	Always wear safety glasses when servicing this equipment.

	⚠ WARNING
	To avoid serious burns, do NOT touch the kettle while it is hot.

	⚠ WARNING
	Any alterations to this equipment will void the warranty and may cause a dangerous situation. NEVER make alterations to the equipment. Make sure all machine switches are in the OFF position before plugging the equipment into a receptacle.

	⚠ DANGER
	Machine must be properly grounded to prevent electrical shock to personnel. Do NOT immerse the kettle, warmer, or any other part of this equipment in water. Always unplug the equipment before cleaning or servicing.

NOTE

The information, specifications and illustrations contained in this manual represent the latest data available at time of publication. Right is reserved to make changes as required at the discretion of Gold Medal Products Company without notice.

INTRODUCTION

Your new POPCORN SHOP popcorn machine is shipped completely assembled and ready to operate. After removing the corrugated carton from the machine, check thoroughly for any damage which may have occurred in transit. Claims should be filed immediately with the transit company.

Remove all cardboard packing and tape from machine. Wipe all exposed surfaces with a damp cloth to remove fingerprints, smears, etc. which may have occurred during unpacking and handling.

ELECTRICAL REQUIREMENTS

Standard voltage for the POPCORN SHOP popcorn machine is 120 volts, 60 hertz, single phase, A.C. current. The unit should be placed on its own 20 AMP electrical circuit. The switches to control the heaters, kettle and lights are located at the top on the inside of the cabinet.

CONTROLS

There are three switches on each side of the machine:

LIGHT AND WARMER SWITCH

Activates bottom corn pan heat and flood lamps.

KETTLE MOTOR SWITCH

Activates motor which drives kettle agitator shaft.

KETTLE HEAT SWITCH

Activates kettle heat element.

AMOUNT OF POPCORN AND OIL

Your new popper is equipped with an eight ounce corn measure. We recommend flavored and colored coconut oil bars as they are very handy and stay fresher longer. Coconut oil does not leave black deposits in your kettle like other oils.

CORN CHARGE	8 ounces
OIL CHARGE	2-3 ounces
SEASONING	1 Tbsp FLAVACOL


POPPING INSTRUCTIONS


1. Turn kettle heat and kettle motor switches on.
2. Make test pop with 3 kernels of popcorn and 1 ounce of oil.
3. Load corn charge, oil charge and seasoning to kettle.
4. When corn has popped dump kettle.
5. Repeat cycle starting with step #3.
6. Always pop 3-5 batches of popcorn for best results.


CARE AND CLEANING

The aluminum frame of the popcorn machine is easy to keep clean. Usually a damp cloth will remove all dirt and grease spots. **NEVER USE ABRASIVES** on the aluminum framework. The glass should always be clean and sparkling. Remember to clean the inside of the glass, too. Empty the old maid drawers and wipe clean. Remove bottom corn pans and clean out any stray debris.

MAINTENANCE INSTRUCTIONS

	⚠ CAUTION
	<p>THE FOLLOWING SECTIONS OF THIS MANUAL ARE INTENDED ONLY FOR QUALIFIED SERVICE PERSONNEL WHO ARE FAMILIAR WITH ELECTRICAL EQUIPMENT. THESE ARE NOT INTENDED FOR THE OPERATOR.</p>

	⚠ WARNING
	<p>Adequate eye protection must be used when servicing this equipment to prevent the possibility of injury.</p>

	⚠ DANGER
	<p>Do NOT immerse the kettle, warmer, or any other part of this equipment in water. Unplug your machine before servicing.</p>

ORDERING SPARE PARTS

1. Identify the desired part by checking it against the photos, illustrations, and/or the parts list.
2. When ordering, please include part number, part name, and quantity desired.
3. Please include your model name and machine serial number (located on the machine nameplate) with your order.
4. Address all parts orders to:

Parts Department
 Gold Medal Products Co.
 10700 Medallion Drive
 Cincinnati, Ohio 45241-4807

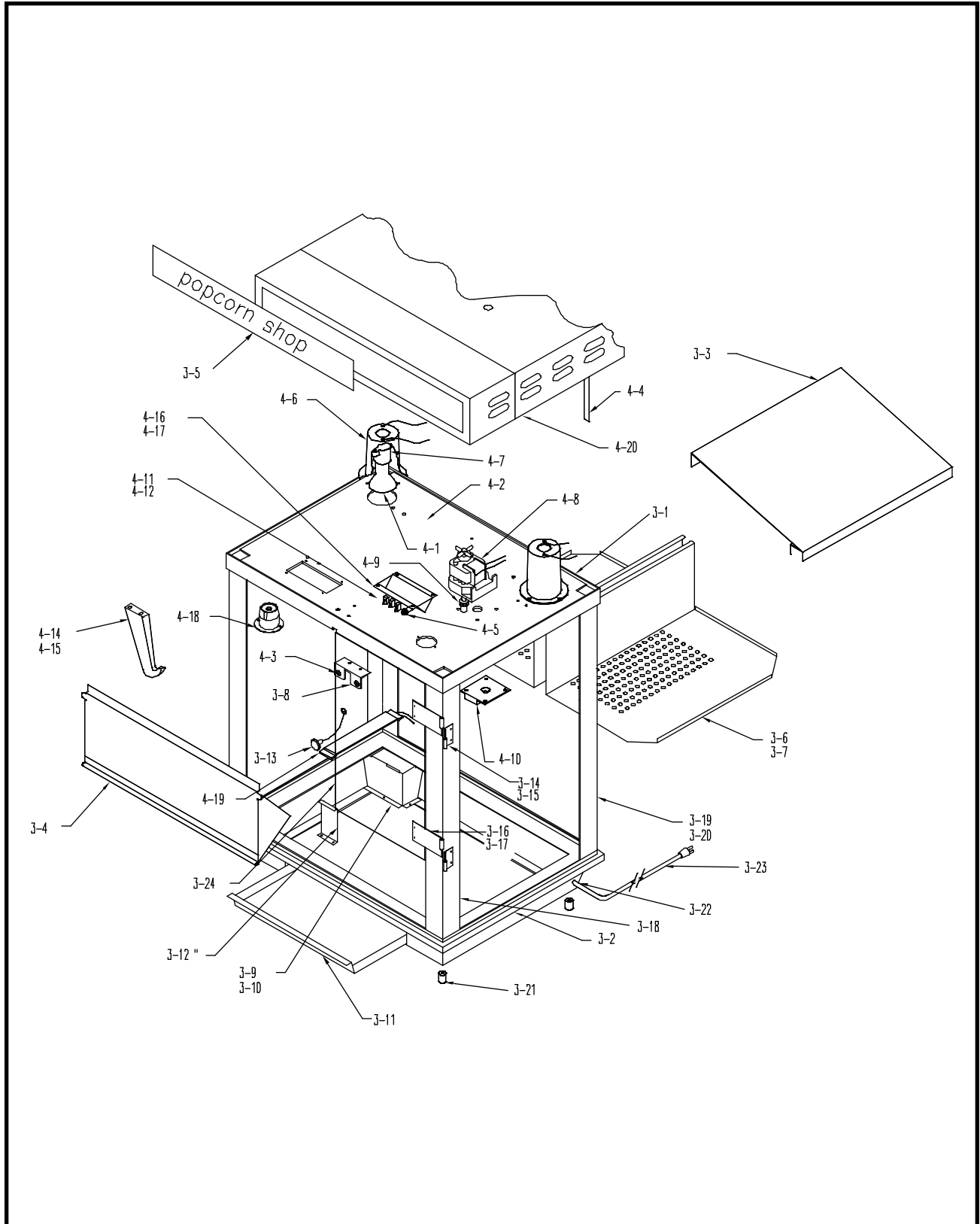
or, place orders at:

(513) 769-7676
 Fax: (513) 769-8500
 E-mail: goldme19@eos.net

NOTE: We do not ship glass, obtain replacement glass from your local glass shop or hardware store. Always purchase double strength type glass. Sizes are:

FRONT GLASS	28 ³ / ₁₆ " x 22 ¹⁵ / ₁₆ " x ¹ / ₈ "
SIDE GLASS	28 ³ / ₁₆ " x 15 ¹ / ₂ " x ¹ / ₈ "

CABINET ASSEMBLY



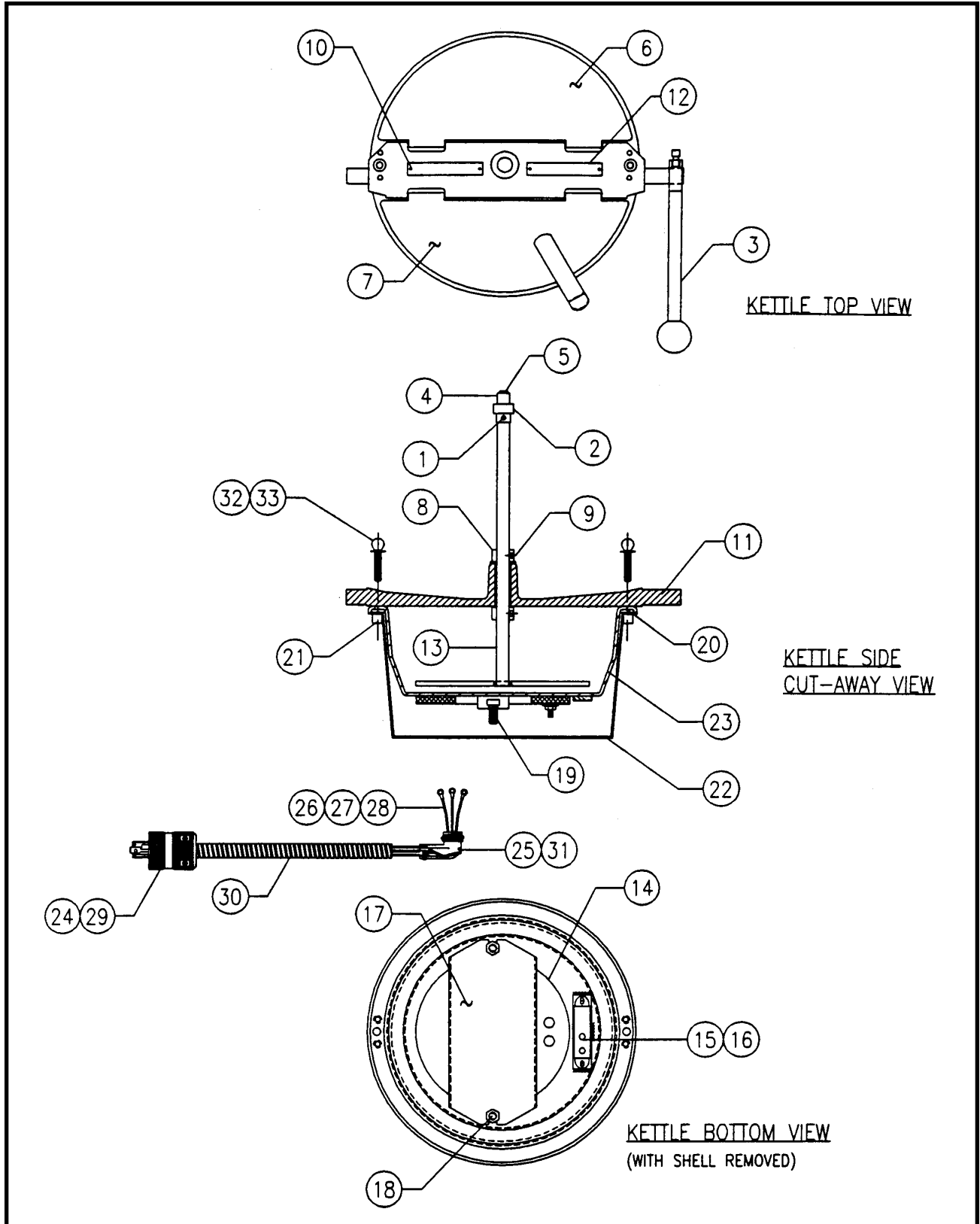
PARTS LIST - POPCORN SHOP CABINET ASSEMBLY

Item No.	Part No.	Description
3-0	16104	Cabinet Assembly
3-1	16101	Top Frame Assembly
3-2	47182	Bottom Frame Assembly
3-3	16109	Baffle Weld Assembly
3-4	47337	Drop Panel Assembly
3-5	16189	Popcorn Shop Sign
3-6	16188	Right Corn Pan
3-7	16187	Left Corn Pan
3-8	16139	Magnetic Catch Bracket
3-9	16144	Left Element Box
3-10	16147	Right Element Box
3-11	47336	Old Maid Pan
3-12	16146	Element Bracket
3-13	41013	Door Knob
3-14	41349	Right Male Hinge
3-15	41350	Left Male Hinge
3-16	41351	Right Female Hinge
3-17	41352	Left Female Hinge
3-18	47178	Front Corner Post
3-19	47179	Right Rear Corner Post
3-20	47180	Left Rear Corner Post
3-21	47328	Glide
3-22	76026	Strain Relief
3-23	47602	Lead-In Cord
3-24	47600	Door
	16183	Bottom Cover
	47592	Glass Retainer Rear
	47593	Glass Retainer Front
	47692	Rigid Channel 15 $\frac{3}{8}$ "
	47694	Rigid Channel 22 $\frac{7}{8}$ "
	47697	Rigid Channel 27 $\frac{13}{16}$ "
	47236	Bushing Snap
	47237	Door Striker

PARTS LIST - POPCORN SHOP HANGER ASSEMBLY

Item No.	Part No.	Description
4-0	16111	Hanger Assembly
4-1	13157	Reflector Flood Lamp
4-2	16115	Motor Mount Plate
4-3	16141	Magnetic Catch
4-4	16142	Dome Spacer
4-5	41033	Pilot Light
4-6	41782	Light Mount Bracket
4-7	47047	Lamp Holder
4-8	47038	Kettle Drive Motor
4-9	47059	Spur Gear
4-10	47065	Gear Box
4-11	47201	Switch
4-12	47202	Switch, Motor/Light
4-13	47282	Bushing Snap
4-14	47263	Rear Hanger Arm
4-15	47262	Front Hanger Arm
4-16	49099	Switch Box
4-17	49116	Switch Label
4-18	47916	Twist Lock Receptacle
4-19	49440	Strip Heat Element 50W
4-20	16190	Dome Assembly

KETTLE ASSEMBLY



PARTS LIST - KETTLE ASSEMBLY

Item No.	Part No.	Description
1	41742	#10-32 x $\frac{3}{16}$ " Set Screw
2	47059	Spur Gear
3	47102	Dump Handle Assembly
4	47106	Needle Bearing
5	47107	C-Ring
6	47119	Rear Kettle Lid
7	47261	Front Kettle Lid W/Lifter
8	47326	Set Collar
9	47751	1/4-20 X $\frac{3}{16}$ " Set Screw
10	47774	Drive Rivet
11	61025	Crossbar Assembly
12	61028	Kettle Dataplate
13	61066	Agitator Weld Assembly
14	47081	Heat Element 1350W
15	47676	Thermostat
16	49136	#6-32 X $\frac{3}{16}$ " Screw Pn Hd Ms
17	49310	Element Retainer Bracket
18	49317	5/16-18 Serrated Lock Nut
19	49446	5/16-18 X $\frac{3}{4}$ " Bolt Sq Hd
20	61012	Kettle Gasket
21	61013	Block, Shell & Kettle
22	61017	8 Oz. Kettle Shell
23	61019	8 Oz. Kettle Weld Assembly
24	61053	8 Oz. Kettle Lead-In Cord
25	46241	90 Degree Connector
26	47708	Black Kettle Lead Wire
27	47709	White Kettle Lead Wire
28	47710	Green Kettle Lead Wire
29	47915	Twist Lock Plug
30	82107-24	SS Flex Conduit 24" Long
31	82135	Conduit Bushing
32	61068	1/4-20 X 1 $\frac{1}{4}$ " Thumb Screw
33	76079	1/4" Internal Tooth Washer

WARRANTY

WE WARRANT to the original purchaser the Gold Medal equipment sold by us to be free from defects in material or workmanship under normal use and service. Our obligation under this warranty shall be limited to the repair or replacement of any defective part for a period of six (6) months from the date of sale to the Original Purchaser with regard to labor and two (2) years with regard to parts and does not cover damage to the equipment caused by accident, alteration, improper use, voltage, abuse, or failure to follow instructions.

THIS WARRANTY IS IN LIEU OF ALL OTHER WARRANTIES EXPRESSED OR IMPLIED, AND OF ALL OTHER OBLIGATIONS OR LIABILITIES ON OUR PART, INCLUDING THE IMPLIED WARRANTY OF MERCHANTABILITY. THERE ARE NO WARRANTIES WHICH EXTEND BEYOND THE DESCRIPTION ON THE FACE HEREOF. We neither assume, nor authorize any other person to assume for us, any other obligation or liability in connection with the sale of said GOLD MEDAL equipment or any part thereof.

The term "Original Purchaser" as used in this warranty shall be deemed to mean that person, firm, association, or corporation who was billed by the GOLD MEDAL PRODUCTS COMPANY, or their authorized distributor for the equipment.

THIS WARRANTY HAS NO EFFECT AND IS VOID UNLESS THE ORIGINAL PURCHASER FIRST CALLS GOLD MEDAL PRODUCTS COMPANY AT 1-800-428-2676 TO DISCUSS WITH OUR SERVICE REPRESENTATIVE THE EQUIPMENT PROBLEM, AND, IF NECESSARY, FOR INSTRUCTIONS CONCERNING THE REPAIR OR REPLACEMENT OF PARTS.

NOTE: This equipment is manufactured and sold for commercial use only.



GOLD MEDAL PRODUCTS COMPANY
10700 Medallion Drive
Cincinnati, OH 45241-4807 USA