

16 Oz. Twin Pop

Part No. 16044
Revised June 1996

Popcorn Machine Instruction Manual Model #1616





 **GOLD MEDAL**®


FUNFOOD EQUIPMENT & SUPPLIES


Cincinnati, OH 45241-4807 USA


SAFETY PRECAUTIONS

	⚠ CAUTION
	This equipment is designed and sold for commercial use only. This equipment is not to be used by the consumer in home use. Do not allow direct contact of this equipment by the public when used in food service locations. Only personnel trained and experienced in the equipment operation may operate this equipment. Carefully read all installation instructions before operating the equipment.

	⚠ WARNING
	Always wear safety glasses when servicing this equipment.

	⚠ WARNING
	To avoid serious burns, do NOT touch the kettle while it is hot.

	⚠ WARNING
	Any alterations to this equipment will void the warranty and may cause a dangerous situation. NEVER make alterations to the equipment. Make sure all machine switches are in the OFF position before plugging the equipment into a receptacle.

	⚠ DANGER
	Machine must be properly grounded to prevent electrical shock to personnel. Do NOT immerse the kettle, warmer, or any other part of this equipment in water. Always unplug the equipment before cleaning or servicing.

NOTE

The information, specifications and illustrations contained in this manual represent the latest data available at time of publication. Right is reserved to make changes as required at the discretion of Gold Medal Products Company without notice.

INTRODUCTION

Your new #1616 Twin Pop is shipped completely assembled, ready to operate. After removing the corrugated carton from the machine, check thoroughly for any damage which may have occurred in transit. Claims should be filed immediately with the transportation company.

Remove all cardboard packing and tape from the machine. Wipe all exposed surfaces with a damp cloth to remove fingerprints, smears, etc... which may have occurred during unpacking and handling.

ELECTRICAL REQUIREMENTS

Standard voltage for the Twin Pop is 120V, 60 cycle, single phase, A.C. current. The unit should be placed on its own 30 Amp (4 wire) electrical circuit. The switches to control the heaters, kettles, and lights are located at the top on the inside of the cabinet.

CONTROLS

There are three switches on each side of the machine.

LIGHTS

Turns on internal lights and dome light.

WARMER

Turns on corn pan heaters.

KETTLE MOTOR SWITCH

Turns on motor which drives kettle agitator shaft.

KETTLE HEAT SWITCH

Turns on kettle heat elements.

OIL SYSTEM MASTER

Turns heater on in the oil bucket pump.

OIL PUMP

Dispenses oil into the kettle.

AMOUNT OF POPCORN AND OIL CHARGE

Your new popper is equipped with a sixteen ounce corn measure cup. We recommend flavored and colored coconut oil. Popcorn popped in coconut oil stays fresher longer. Coconut oil does not leave the black deposits in your kettle like other oils.

CORN CHARGE -	16 Ounces
OIL CHARGE -	4 Ounces
FLAVACOL -	4 Tablespoons




POPPING INSTRUCTIONS

1. Turn kettle heat and kettle motor switch on.
2. Make test pop with 3 kernels of corn and 1 Ounce of oil.
3. Load corn, oil bar, and seasoning into kettle.
4. When corn has popped dump kettle.
5. Repeat cycle starting with Step 3.
6. Always pop three to five batches for best results.

CARE AND CLEANING

The aluminum frame of the popcorn machine is easy to keep clean. Usually a damp cloth will remove all dirt and grease spots. NEVER USE ABRASIVES on the aluminum framework. The glass should always be clean and sparkling. Remember the inside of the glass must be cleaned too. Empty the old maid drawers and wipe clean. Remove bottom cabinet pans and clean out any stray debris.

MAINTENANCE INSTRUCTIONS

	⚠ CAUTION
	<p>THE FOLLOWING SECTIONS OF THIS MANUAL ARE INTENDED ONLY FOR QUALIFIED SERVICE PERSONNEL WHO ARE FAMILIAR WITH ELECTRICAL EQUIPMENT. THESE ARE NOT INTENDED FOR THE OPERATOR.</p>
	⚠ WARNING
	<p>Adequate eye protection must be used when servicing this equipment to prevent the possibility of injury.</p>
	⚠ DANGER
	<p>Do NOT immerse the kettle, warmer, or any other part of this equipment in water. Unplug your machine before servicing.</p>

ORDERING SPARE PARTS

1. Identify the desired part by checking it against the photos, illustrations, and/or the parts list.
2. When ordering, please include part number, part name, and quantity desired.
3. Please include your model name and machine serial number (located on the machine nameplate) with your order.
4. Address all parts orders to:

Parts Department
 Gold Medal Products Co.
 10700 Medallion Drive
 Cincinnati, Ohio 45241-4807

or, place orders at:
 (513) 769-7676
 Fax: (513) 769-8500
 E-mail: goldme19@eos.net

NOTE: We do not ship glass, obtain replacement glass from your local glass shop or hardware store. Always purchase double strength type glass. Sizes are:

FRONT GLASS	32 ³ / ₁₆ " x 31 ¹ / ₁₆ " x ¹ / ₈ "
SIDE GLASS	32 ³ / ₁₆ " x 23 ¹ / ₁₆ " x ¹ / ₈ "

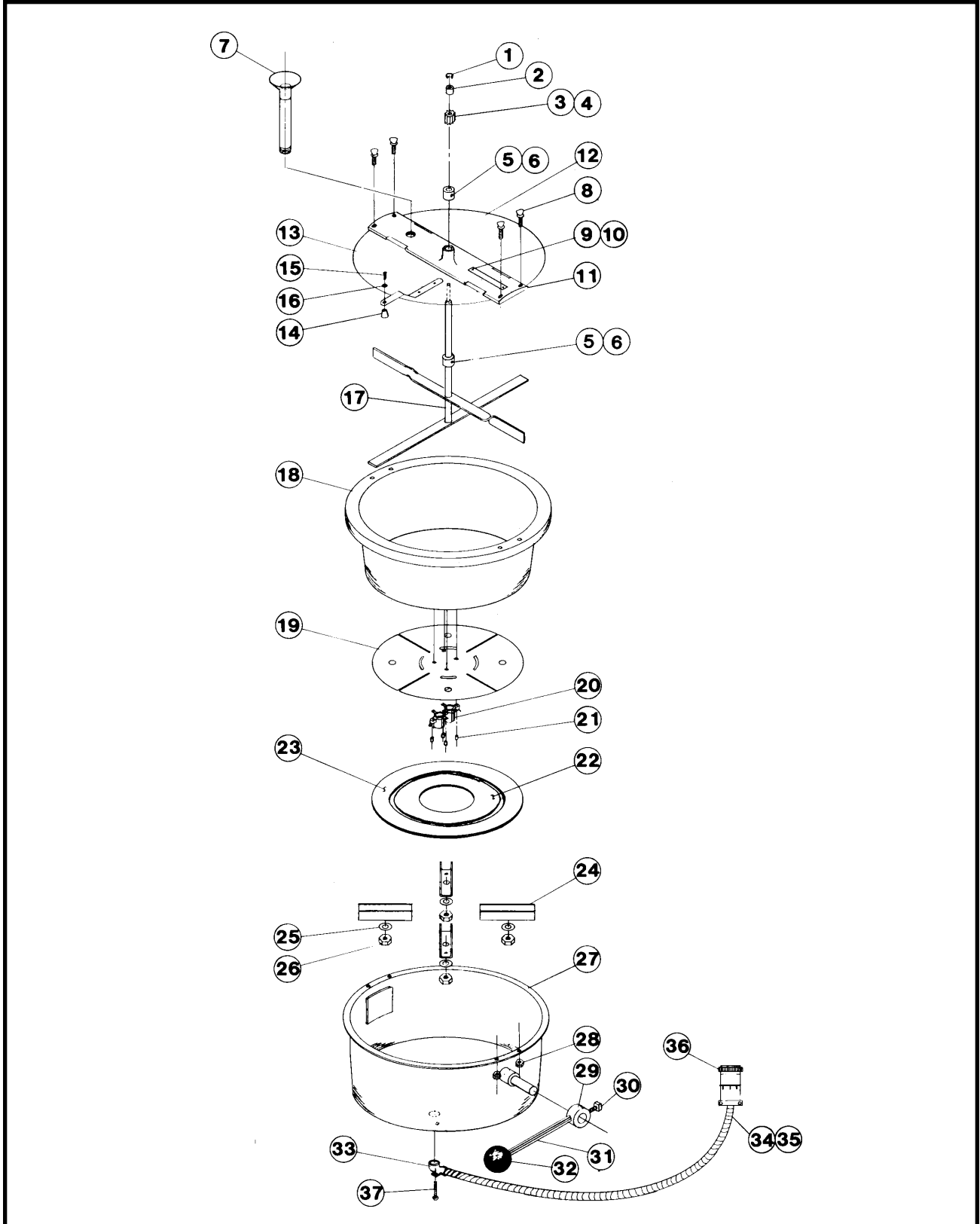
PARTS LIST - CABINET ASSEMBLY

Item No.	Part No.	Description
3-0	16032	Cabinet Assembly 1616
3-1	16001	Top Frame
3-2	16003	Bottom Frame
3-3	16005	Divider Panel
3-4	16008	Drop Panel R.H.
3-5	16010	Drop Panel L.H.
3-6	16014	Corn Pan R.H.
3-7	16016	Corn Pan L.H.
3-8	16139	Magnetic Catch Bracket
3-9	41879	Corner Cover
3-10	47364	Circuit Breaker 15A
3-11	40276	Old Maid Pan
3-12	47208	Terminal Block
3-13	41013	Door Knob
3-14	41349	Door Male Hinge R.H.
3-15	41350	Door Male Hinge L.H.
3-16	41351	Door Female Hinge R.H.
3-17	41352	Door Female Hinge L.H.
3-18	41870	Corner Post Front
3-19	41872	Corner Post Right Rear
3-20	41871	Corner Post Left Rear
3-21	47236	Bushing Snap
3-22	47237	Door Striker
3-23	41282	Rubber Foot
3-24	41635	Front Glass
3-25	41636	Side Glass
3-26	41283	Bottom Cover
3-27	41766	Glass Retainer Rear
3-28	41765	Glass Retainer Front
3-29	41637	Door
3-30	41858	Rigid Channel 32"
3-31	47694	Rigid Channel 22 ⁷ / ₈ "
3-32	41860	Rigid Channel 26"
3-33	41106	Switch Box Oil Pump
3-34	16050	Lead-In Cord
3-35	16006	Divider Rail Top
3-36	47799	Light Shield
3-37	41712	Molded Receptacle

PARTS LIST - CABINET ASSEMBLY (continued)

Item No.	Part No.	Description
4-0	16002	Complete Hanger Assembly
4-1	41671	Reflector Flood Light
4-2	16019	Motor Mount Plate
4-3	16141	Magnetic Catch
4-4	41184	Dome Spacer
4-5	41033	Pilot Light
4-6	49095	Light Mount Bracket
4-7	47047	Lamp Holder
4-8	47183	Motor 50-60CY
4-9	47059	Spur Gear
4-10	47065	Gear Box
4-11	47201	Switch
4-12	47202	Switch, Motor/Light
4-13	47282	Bushing Snap
4-14	47263	Hanger Arm Rear
4-15	47262	Hanger Arm Front
4-16	41004	Switch Box
4-17	49116	Switch Label
4-18	49330	Receptacle 15A Twist Lock
4-19	44026	Strip Heat Element 75W
4-20	16048	Bottom Divider Rail
4-21	16035	Hanger Arm Rear Left
4-22	41325	Receptacle Assembly
4-23	41015	Exhaust Blower
4-24	41006	Blower Box Assy.
4-25	16052	Switch Label
4-26	41250	Grease Filter
4-27	41107	Control Box
4-28	41108	Control Box Cover
4-29	41109	Switch Box Cover
DOME ASSEMBLY		
4-30	16028	Dome Assembly Complete
4-31	16030	Main Rear Wrapper
4-32	16031	Inspection Plate
4-33	41020	Light Tube Holder
4-34	41021	Light Tube Hold w/ Start
4-35	41507	Flourescent Tube
4-36	41508	Starter FS-25
4-37	41509	Ballast
4-38	41800	Front Wrapper Assembly
4-39	41803	Support Angle
4-40	47726	Molded Plug

KETTLE ASSEMBLY



PARTS LIST - KETTLE ASSEMBLY R.H.

Item No.	Part No.	Description
1	47107	C-Ring
2	47106	Needle Bearing
3	47059	Spur Gear
4	41742	Set Screw #10-32
5	47326	Set Collar
6	47751	Set Screw #1/4-20
7	41239	Oil Tube w/ Funnel
8	47691	Thumb Screw
9	47154	Warning Plate
10	47774	Rivet
11	41144	Crossbar Assembly
12	41120	Rear Lid
13	See Left and Right Dump Only	Front Kettle Lid Assembly
14	47120	Lid Lift Knob
15	74141	Screw #8-32 x 3/8"
16	74150	Washer #8
17	41093	Agitator Shaft Assembly
18	41069	Kettle Assembly Plated
19	41127	Heat Transfer Plate
20	82219	Thermostat L510
21	41435	Retaining Nut
22	41155	Heat Element 500W
23	41183	Heat Element 1250W
24	41878	Element Retainer
25	76079	Washer #1/4-20 Int.
26	74133	Nut #1/4-20 Hex
27	See Left and Right Dump Only	Shell Assembly 16 Oz.
28	74133	Nut #1/4-20 Hex
29	47325	Set Collar
30	47662	Set Screw 5/16-18
31	47707	Dump Handle Shaft
32	47110	Knob
33	46241	Connector 90 Degree
34	82107-24	Conduit
35	82135	Conduit Bushing
36	47951	Plug
37	41245	Thermostat Hold Down
38	41318	Kettle Lead Assembly
39	49350	Conduit Caution Label

RIGHT HAND DUMP KETTLE

2-5	2223	16 Oz. Steel Kettle Complete
2-6	41066	Agitator/Lid Assembly R.H.
2-7	41130	Front Kettle Lid R.H.
2-8	41326	16 Oz. Steel Kettle Bottom
2-9	41081	Shell Assembly 16 Oz. R.H.

PARTS LIST - KETTLE ASSEMBLY L.H.

Item No.	Part No.	Description
1	47107	C-Ring
2	47106	Needle Bearing
3	47059	Spur Gear
4	41742	Set Screw #10-32
5	47326	Set Collar
6	47751	Set Screw #1/4-20
7	41239	Oil Tube w/ Funnel
8	47691	Thumb Screw
9	47154	Warning Plate
10	47774	Rivet
11	41144	Crossbar Assembly
12	41120	Rear Lid
13	See Left and Right Dump Only	Front Kettle Lid Assembly
14	47120	Lid Lift Knob
15	74141	Screw #8-32 x 3/8"
16	74150	Washer #8
17	41093	Agitator Shaft Assembly
18	41069	Kettle Assembly Plated
19	41127	Heat Transfer Plate
20	82219	Thermostat L510
21	41435	Retaining Nut
22	41155	Heat Element 500W
23	41183	Heat Element 1250W
24	41878	Element Retainer
25	76079	Washer #1/4-20 Int.
26	74133	Nut #1/4-20 Hex
27	See Left and Right Dump Only	Shell Assembly 16 Oz.
28	74133	Nut #1/4-20 Hex
29	47325	Set Collar
30	47662	Set Screw 5/16-18
31	47707	Dump Handle Shaft
32	47110	Knob
33	46241	Connector 90 Degree
34	82107-24	Conduit
35	82135	Conduit Bushing
36	47951	Plug
37	41245	Thermostat Hold Down
38	41318	Kettle Lead Assembly
39	49350	Conduit Caution Label

LEFT HAND DUMP KETTLE

2-0	16004	16 Oz. Kettle L.H. Complete
2-1	16015	Agitator/Lid Assy. L.H.
2-2	16011	Front Kettle Lid L.H.
2-3	16017	16 Oz. Steel Kettle BTM.
2-4	16018	Shell Assembly 16 Oz. L.H.

WARRANTY

WE WARRANT to the original purchaser the Gold Medal equipment sold by us to be free from defects in material or workmanship under normal use and service. Our obligation under this warranty shall be limited to the repair or replacement of any defective part for a period of six (6) months from the date of sale to the Original Purchaser with regard to labor and two (2) years with regard to parts and does not cover damage to the equipment caused by accident, alteration, improper use, voltage, abuse, or failure to follow instructions.

THIS WARRANTY IS IN LIEU OF ALL OTHER WARRANTIES EXPRESSED OR IMPLIED, AND OF ALL OTHER OBLIGATIONS OR LIABILITIES ON OUR PART, INCLUDING THE IMPLIED WARRANTY OF MERCHANTABILITY. THERE ARE NO WARRANTIES WHICH EXTEND BEYOND THE DESCRIPTION ON THE FACE HEREOF. We neither assume, nor authorize any other person to assume for us, any other obligation or liability in connection with the sale of said GOLD MEDAL equipment or any part thereof.

The term "Original Purchaser" as used in this warranty shall be deemed to mean that person, firm, association, or corporation who was billed by the GOLD MEDAL PRODUCTS COMPANY, or their authorized distributor for the equipment.

THIS WARRANTY HAS NO EFFECT AND IS VOID UNLESS THE ORIGINAL PURCHASER FIRST CALLS GOLD MEDAL PRODUCTS COMPANY AT 1-800-428-2676 TO DISCUSS WITH OUR SERVICE REPRESENTATIVE THE EQUIPMENT PROBLEM, AND, IF NECESSARY, FOR INSTRUCTIONS CONCERNING THE REPAIR OR REPLACEMENT OF PARTS.

NOTE: This equipment is manufactured and sold for commercial use only.



GOLD MEDAL PRODUCTS COMPANY
10700 Medallion Drive
Cincinnati, OH 45241-4807 USA